

# CBEP / JIVE User Group seminar Bus maintenance at ESWE Verkehr

October 20th 2022

David Coleman

hynes – Hydrogen and new Energy  
Solutions GmbH







01

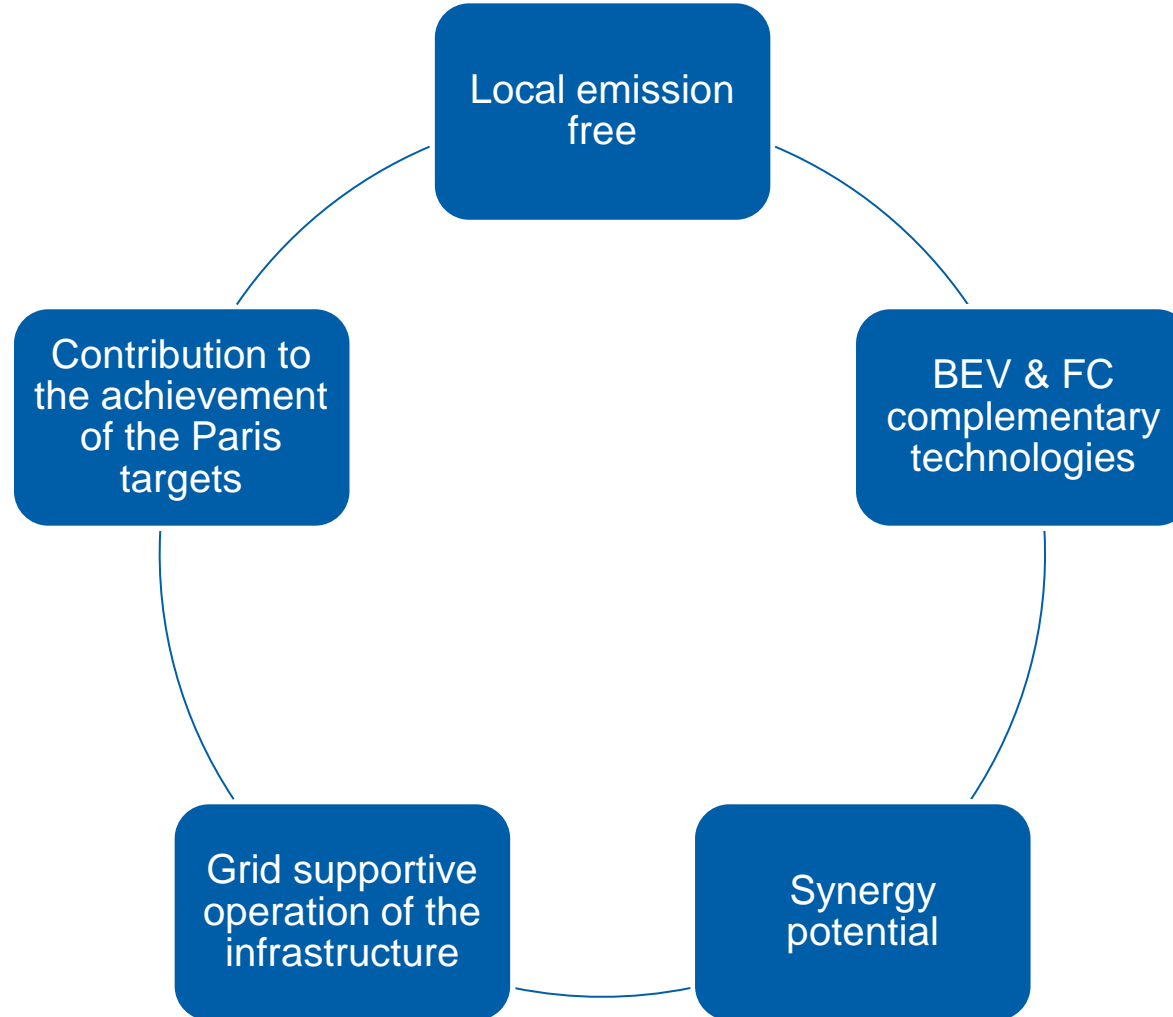
## ESWE Verkehr approach

# Technology-open approach of ESWE Verkehr

BEB



FCB

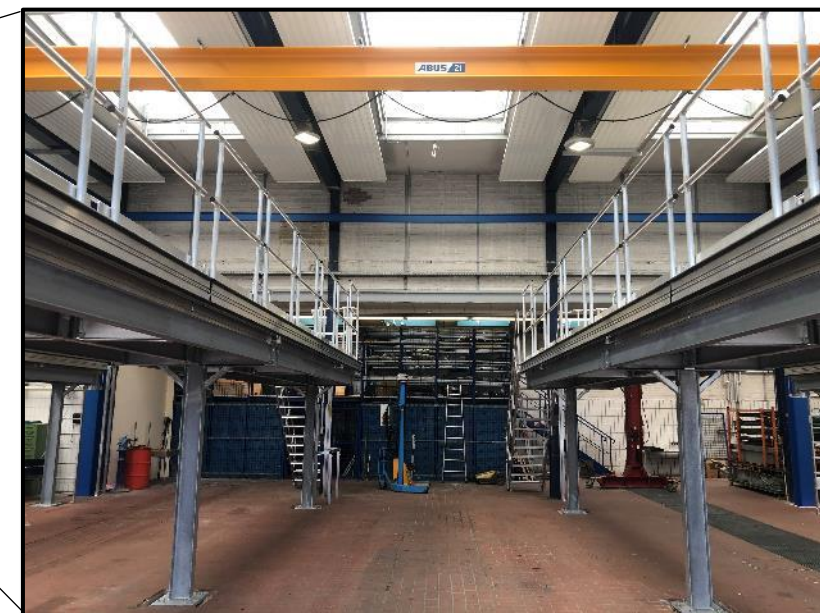
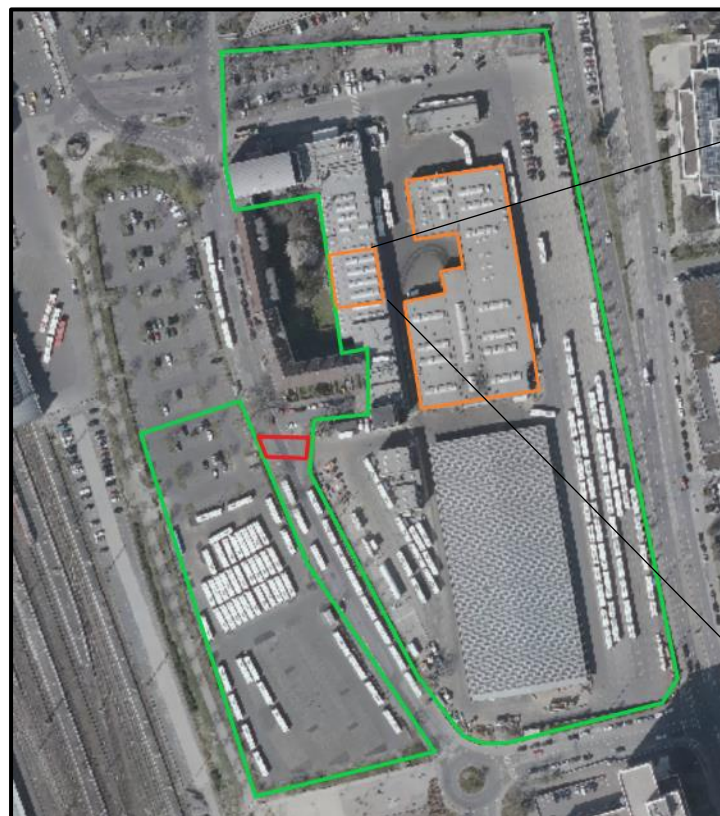




# Bus maintenance at ESWE Verkehr

Difference in bus maintenance with the rest of the non-FCB fleet

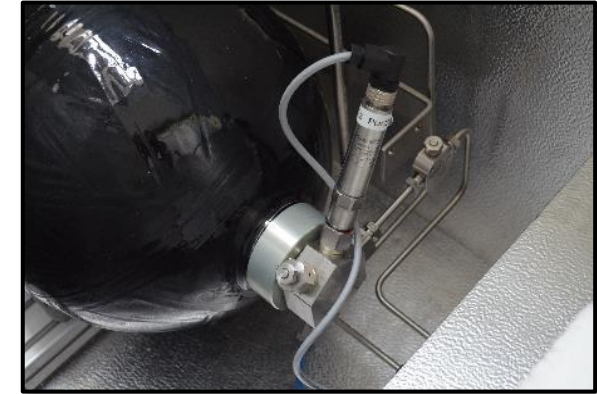
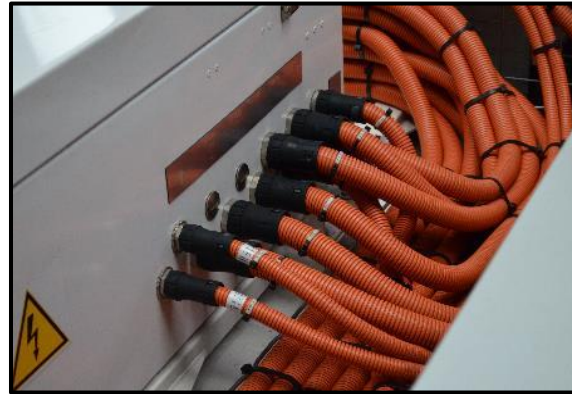
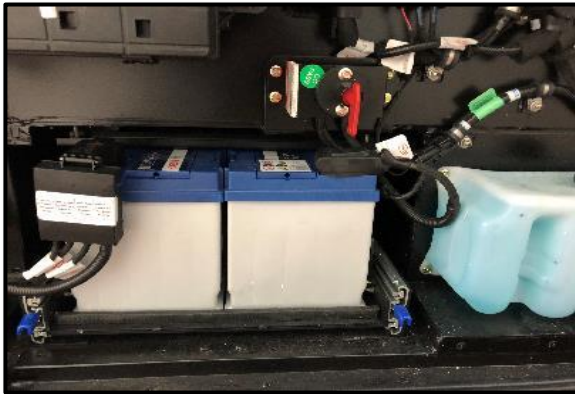
- Challenges
  - Conversion in existing buildings
  - 3 different propulsion technologies
- 3 stationary and 1 mobile elevated work stands with overhead crane
- Awareness and training of
  - > 1,000 drivers and
  - HV training of the entire workshop staff



# Bus maintenance at ESWE Verkehr

Technical issues that have required specific/quick maintenance or that are recurring

- Conventional parts
  - Connectors
  - Fuses (low voltage)
  - Compressors (air)
- High voltage
  - Traction battery
  - Inverter
  - Charging
- Hydrogen
  - Fuel cell control



# Bus maintenance at ESWE Verkehr

Solutions that have been put into place/ Lessons learned and recommendations

## ▪ Solutions:

- Workshop adaption for conducting maintenance in house
- Training of the entire workshop staff
- Improvement of communication between workshop and flying doctors
- Product improvement on the fly
- Continuous process development

## ▪ Other current Challenges:

- Development of a sound hydrogen supply chain
- Increasing hydrogen costs
- Space on the depot and a lack of drivers

## ▪ Lessons learned:

- Increasing operational time
- Initiation phase with small driver pool to increase acceptance among drivers and quality of feed back

## ▪ Recommendations:

- Improving international codes and standards for signal transmission between new technology components and fleet management system (ITCS)
- Adoption of German standards (VDV i.e. driver workplace, charging protocol interoperability)
- Provision of a central diagnostic interface with plain text error code



# Thank you for your attention

**ESWE Verkehrsgesellschaft mbH**  
Gartenfeldstraße 18  
65189 Wiesbaden

Tel.: (+49 611) 450 22-450

E-Mail: [internet@eswe-verkehr.de](mailto:internet@eswe-verkehr.de)

Web: [www.eswe-verkehr.de](http://www.eswe-verkehr.de)